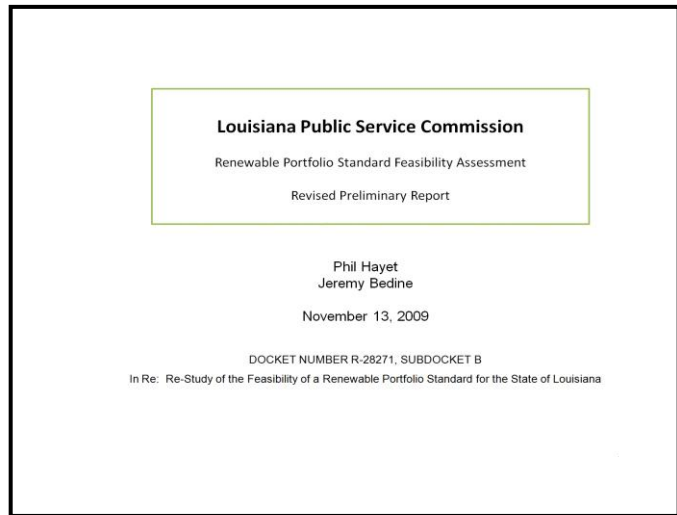
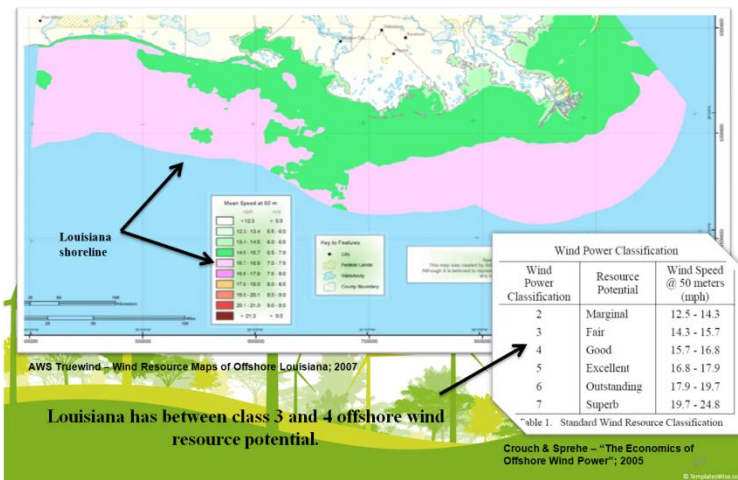




Sela Energy worked closely with J. Kennedy and Associates and the Louisiana Public Service Commission, to prepare a full scale analysis and recommendation of available renewable resources for electricity generation in the State of Louisiana. In addition to this, we assessed Louisiana's capacity to meet national renewable portfolio standard requirements as stipulated in H.R. 2454 (the Waxman Markey Bill). This project included an intensive stakeholder process and the final report received praise for the inclusiveness of the reporting process itself. The Louisiana Public Service Commission itself also commended the parties involved for our in-depth economic analysis of multiple renewable generation technologies.



Wind Resource Map for Louisiana



For more information or to read the full report, please contact us at [info@selaenergy.com](mailto:info@selaenergy.com).

3614 Clearview Prkwy  
Atlanta, GA 30329  
O: 404.806.9550 \* F: 404.806.9542